



# Camp Lone Star Volunteers

CAMP LONE STAR VOLUNTEER  
PROJECTS

2010 Project Book

A **Volunteer Profile** can be found on our website ([www.LOMT.com](http://www.LOMT.com)) or by contacting us at 800-362-2078 or [lomt@lomt.com](mailto:lomt@lomt.com).



**Camp Lone Star** is a  
ministry facility of:

**Lutheran Outdoors Ministry  
of Texas**

Camp Lone Star  
2016 Camp Lone Star Road  
La Grange TX 78945  
979-247-4128  
800-362-2078

[www.LOMT.com](http://www.LOMT.com)



**We often hear "how can we help?"**

This book shares many projects suitable for volunteers to accomplish in a day or a weekend. Some projects are essential, others are dreams for a better facility in which to minister the Gospel. God bless you for any help you can give!

As of 6/14/10

The CLS Volunteers program is a way for persons desiring to offer outdoors ministry a few hours of their time and talents to make a huge impact on Camp Lone Star and the many children, youth, and families served each year. Volunteers can come in groups or as individuals. In exchange for service, meals and/or lodging can sometimes be arranged according to the space available at camp and the impact of the project. Generally, meals costs can be waived if the volunteer (group) provides financial assistance or supplies work materials.

Look over the following projects and when you see one that is a good match to you or a group you can organize, contact the camp to find out times, meals, and lodging that is available. Health Forms and Liability Waivers are required for all persons spending time or working at camp and these will be sent to you as part of your registration for a project.

Please consider completing and returning an LOMT Volunteer Profile so that we can match your skills and interests with needed projects.

NOTE: Some fraternal insurance companies (Thrivent Financial for Lutherans, etc.) or others may provide money for projects. Be sure to ask about this opportunity and utilize any assistance available!

Thank you for seeing a need and offering to be a Christian servant!



## Ways I Can Help

*“...a mission of renewal and outreach in the midst of God’s creation and among His people...”*

We need donations of time and talents, but mostly we need your prayers that God will provide for our needs as we are led by Him to accomplish His Purpose and Plans.

Thank you for considering how you can help LOMT/CLS minister to God’s people!

---

## Ways I Can Help

List below some ways you might be able to help Camp Lone Star. Then call (800-362-2078) or email (lonestar@lomt.com) and get serious about putting your faith into action!

1. \_\_\_\_\_
2. \_\_\_\_\_
3. \_\_\_\_\_
4. \_\_\_\_\_
5. \_\_\_\_\_
6. \_\_\_\_\_

Here are just a few of the immediate items we need donations to support. This list will be updated regularly, but please call to verify current needs.

**Base Camp Outdoor Lighting:** \$1,800-ish (2-5 light clusters) or \$2,500-ish (5-9 light clusters). Again, this one needs to be done by a professional, but the need for more lighting is great and would make a ‘visible’ 😊 improvement!

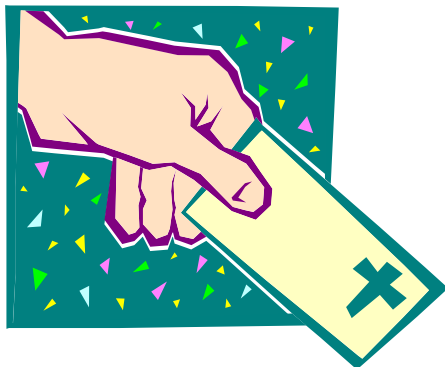
**Tractor:** \$40,000

Need: 4 wheel drive, 30 to 50 horse power with a front end loader, and PTO for using other implements on the back end.

Want: with Backhoe or back hoe compatible (we spend a lot of money every year renting this equipment). Most used implements are auger, blade or box blade, shredder, and single plow.

**Furniture for the Retreat Center Commons Areas:** \$3,000-\$5,000

There is a difference between furniture made for public use and home use. Purchasing good-quality furniture designed for commercial use will pay off in the long run.



**Table of Contents**

**Work Project Needs:**

<i>Covered Platforms</i>	4
<i>Medic Station Repairs</i>	4
<i>Sports Court Remodel</i>	5
<i>Challenge Course Elements</i>	5
<i>Cabin Water Fountains</i>	5
<i>Floor Treatment</i>	6
<i>Barbecue Pit Repair</i>	6
<i>Boat Dock</i>	7
<i>Landscaping</i>	7
<i>Cabin Walkways</i>	8
<i>Re-Build the Boat House</i>	8
<i>Install French Drain</i>	9
<i>Replace Plumbing</i>	9
<i>Remodel Sunset</i>	10
<i>Remodel Alleluia</i>	10
<i>Wet Paint!</i>	11
<i>Pool Retaining Wall</i>	11
<i>Challenge Course Renewal—Completed!</i>	11

**Skilled Labor Needs:**

<i>Outdoor Education Area</i>	12
<i>Telescope Refurbishment &amp; Cabin Upgrades—Completed!</i>	12
<i>Part-time Volunteer Help</i>	13

**Sponsorship Needs:**

<i>Base Camp Outdoor Lighting</i>	14
<i>Tractor</i>	14
<i>Furniture for the Retreat Center Commons Areas</i>	14

**Ways I Can Help**

<i>Checklist</i>	15
------------------	----

## #11-09 Covered Platforms

**Need:** Covered platforms are needed for Adventure programs to shelter campers from the sun or rain.



**Cost:** \$3,000 for cement, hardware, roof decking

**People needed:** 5 people for 30-40 hours (10 people for 15-20 hours)

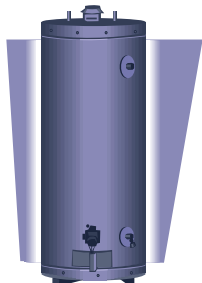
This project needs at least 4 people, but not more than 12. There are different stages and a group can come for whatever amount of time they wish to just work on part of the project.

## #12-09 Medic Station Repairs

**Need:** Plumbing repairs are essential for this older building to be a self-sufficient area to serve medic needs.

**Cost:** \$1,000—\$1,500 to move the water heater and ‘fix’ toilet and shower  
-or- \$3,500—\$4,000 to move water heater and 2 doors, ‘fix’ toilet and shower

**People needed:** 2-5 people for 10-20 hours.



This project requires a fair amount of plumbing skill and some basic carpentry (framing and such). Any Men’s Groups out there?!

**Sponsor a project or volunteer for ‘hands on’ service. We will both be blessed!**

## #30-09 Part-time Volunteer Help

Every so often we need a couple of extra hands to help us get through the weekend. The areas we need help in range from folding laundry to leading a Challenge Course session.

A grant received from Thrivent Financial for Lutherans in 2005 called “**Care Abounds in Service**” helped us to identify and write up training modules for the kinds of volunteer service we often require.

Consider being one of LOMT/CLS’s ‘trained volunteers’ in your choice of the following areas:

**Event Hosting**  
**Life Guarding**  
**Cleaning/Housekeeping**  
**Meal Service Support**  
**Challenge Course**  
**Skeet Shooting**  
**Archery**  
**Games and Activity Leading**  
**Bible Study Writing**  
**Bible Study Leadership**  
**Devotional Writing**  
**Devotional Leadership**

**Astronomy**  
**Project/Work Day Leadership**  
**Campfire Leadership**  
**Song Leading**  
**Worship Planning/Leadership**  
**First Aid**  
**Canoeing**  
**Nature/Environmental Science**  
**Orienteering (Map & Compass)**  
**Outdoor Education Support**  
  
**...and more!**

An **LOMT Volunteer Profile** is a simple two-page form that can alert us to your skill and interest areas. Please fill one out to let us know more about what you have to share! Maybe you have a knack for writing news or human interest articles that relate to outdoors ministry, or you would love to roam the camp’s acres identifying specific flora or fauna. Is there anyone out there who has a passion for telling others about the opportunities available at Camp Lone Star? Or maybe your gift is in carpentry or keeping vehicles running? We want to hear from you!



## #22-09 Refurbish Telescope

Looking at the stars helps us to realize the magnificence of our Creator! Our 12” lens telescope was ‘handmade’ about 20 years ago. The parts in it are still quality, but it needs some overall refurbishing. If you know anything about telescopes or would like to be part of our astronomy program, we’d love to hear from you!



Actually, we had enough donated to purchase a new telescope—you’ll have to schedule ‘star gazing’ for your next retreat!

## Renovating the Base Camp Cabins

This has been an on-going project since the financial support was donated by friends of the camp at the 2009 Annual Camp Lone Star Barbecue.

As you can see, we’re currently working on—it’s likely a task that you can help with! Bring some friends and learn this truth:

**When volunteering, you always get more than you give!**



## #11-10 Sports Court Remodel

**Need:** Revitalize the sports court next to the Retreat Center.

**Cost:** \$1,000

**People needed:** 2-5 people for one day of building and sporting fun.



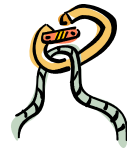
Camp is looking to revitalize the sports court next to the Retreat Center by expanding the sports equipment to include more ‘camp oriented’ games.

## #14-09 Challenge Course Elements

**Need:** New Challenge Course ‘low’ elements to enhance our already existent program. We have 3 to 5 more planned.

**Cost:** \$100—\$1,200/element

**People needed:** 2—10



The Challenge Course program is one we are very passionate about and we’ve so thankful for the new ‘high’ elements built. A few more ‘lows’ will give us a versatile course for any group’s skill level. Any size group can help with building new elements. Designs range from very simple to complex.

## #15-09 Cabin Water Fountains

**Need:** Cool water for hot campers

**Cost:** \$7,000 +

**People needed:** 2—3 skilled plumbers for 5-10 hours



Some new water fountains for the 12 youth cabins have already been donated. Old fountains either need to be refurbished (they are very ‘used’) or more new ones donated. “You gave me water when I was thirsty...”

## #17-09 Floor Treatment

**Need:** flooring, glue, base boards, transitions, etc.

**Cost:** \$600—\$1,000

**People needed:** 2—3 people with medium to high flooring skills for 10-20 hours

The area of flooring we need to replace is on the retreat side of the dining hall around the serving bar. A better floor would mean better safety, cleanliness, and appearance.

---

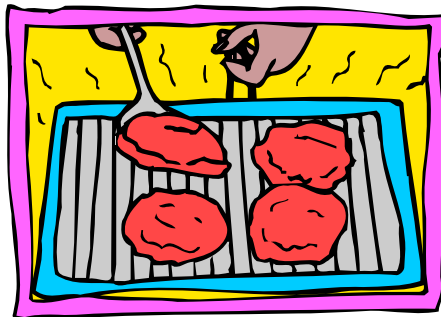
## #12-10 Barbecue Pit Repair

**Need:** Camp's current Barbecue Pit is covered to allow cooking in inclement weather by a very necessary shelter. The supports for this shelter are in need of replacement. This project will require skilled labor since we will be replacing the existing posts without removing the current roof.

**Cost:** \$500

**People needed:** 6-10 skilled workers for a day of jacking, digging, and cooking.

This could be a great Men's Group project...with the reward of enjoying a celebratory cook-out!



## #19-10 Wet Paint!

**Need:** Our pool house bathrooms are in need of some renovation to make them usable for our summer campers, including a good coat of paint.

**Cost:** \$700

**People needed:** 30-12 people for two days of painting and pool fun.



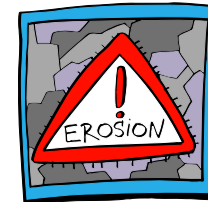
---

## #20-10 Pool Retaining Wall

**Need:** Camp's pool is built below a small hill, and a retaining wall is desired to prevent erosion and infiltration. There are also some drainage problems in this area that need to be addressed.

**Cost:** \$1,400

**People needed:** 15-30 people for two days of digging, post setting and timber laying.



---

## #22-10 Challenge Course Renewal

**Need:** As the camp increases the size and depth of the Challenge Course program, we need help clearing paths for new elements and activities.

**Cost:** \$0

**People needed:** 4-20 people for four hours to several days.

**Completed!**

## #17-10 Remodel Sunset Devo Site

**Need:** CLS's beloved "Sunset" devotion site was built some years ago and is beginning to show its age.

**Cost:** \$1,000

**People needed:** 15-20 people for two days of digging and landscaping.

We plan to rebuild the tiers and staircase to help ensure the continuance of the site and the safety of our campers.

---

## #18-10 Remodel Alleluia Devo Site

**Need:** Alleluia devotion site has seen better days!

**Cost:** \$1,000

**People needed:** 15-20 people for two days of destruction, post setting and bench building.

The current benches need to be removed so that more dependable benches can be set in their place.



## #19-09 Boat Dock

**Need:** Metal supports and wooden decking to refurbish boat dock.

**Cost:** \$2,500—\$3,000

**People needed:** 3-5 for 25-45 hours

This is a very physical project and time sensitive as it can only be done when the lake level is at a certain stage. A safe dock is essential to our canoe program.



---

## #20-09 Landscaping

**Need:** Native Texas plants, rock, soil supplements, railroad ties, etc.

**Cost:** \$300—\$2,000 per project

**People needed:** 2-10 depending on the project

Part of this is motivated by a dream—adding seasonal color and interest areas to highlight an already gorgeous outdoor setting. But practically, we'd also like to see more outdoor 'gathering' areas with benches in the shade...and some landscaping for erosion control is needed, too.



## #13-10 Cabin Walkways

**Need:** In order to reduce the mud and other debris in the cabin area and the cabins themselves, walkways need to be installed in the cabin court-yards.

**Cost:** \$3,000

**People needed:** 6-12 people for one day of setting stones

These walkways will consist of stepping stones so that drainage will not be affected.



---

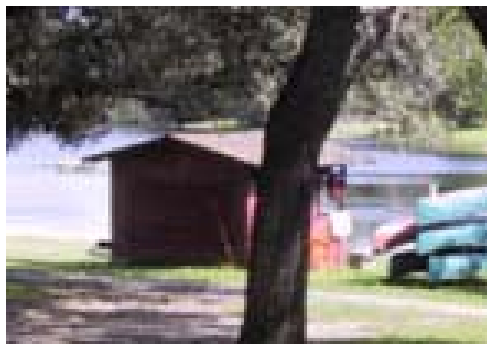
## #14-10 Re-Build the Boat House

**Need:** Camp's current Boat House (canoe paddle & lifejacket storage) is undersized and in disrepair.

**Cost:** \$1,500—\$2,000

**People needed:** 6-12 people for two days of construction and boating fun.

Increasing the boat house size will make it more functional and easier for our campers to use.



## #15-10 Install French Drain

**Need:** Our Trading Post currently collects water and mud from drainage in between the TP building and the Barbecue pit.

**Cost:** \$600

**People needed:** 12 people for two days of digging or 6 people and a backhoe for a day of digging

The plan is to dig a trench along the side of the building and install a French drain allowing the water to flow around the building.



---

## #16-10 Replace Plumbing

**Need:** Over the years the piping that supplies the Maintenance Barn with water has deteriorated to the point that it is in constant need of repair.

**Cost:** \$400

**People needed:** 4-6 people for a day of digging and laying pipe, or 1-2 people and a trencher for a day of digging

Upgrading the water service from roll pipe to PVC piping would eliminate these time and cost intensive interruptions from leaking piping.

